

The Auckland Plan

Presentation to the
Construction Clients Group

11 am

Wednesday, 23 February 2011



What is Spatial Planning?

“Spatial planning gives geographical expression to the economic, social, cultural and ecological policies of society.” ‘Torremolinos Charter’

- *It is at the same time a scientific discipline, an administrative technique and a policy developed as an interdisciplinary and comprehensive approach directed towards a balanced regional development and the physical organisation of space according to an overall strategy.”* (European Regional / Spatial Planning Charter)

The Opportunity – The Auckland Plan - 4 Key Objectives*

- Improving quality of life
- Socio-economic wellbeing
- Responsible management of the environment
- A land use plan in the public interest

* Source: *'Torremolinos Charter' – European Regional/Spatial Planning Charter 1983*



Mayor's Values and Vision for Auckland

- **Inclusive**
- **Courageous**
- **Prudent**
- **Fair**
- **Innovative**

“The world's most liveable city”







Summary of Key Challenges and Opportunities

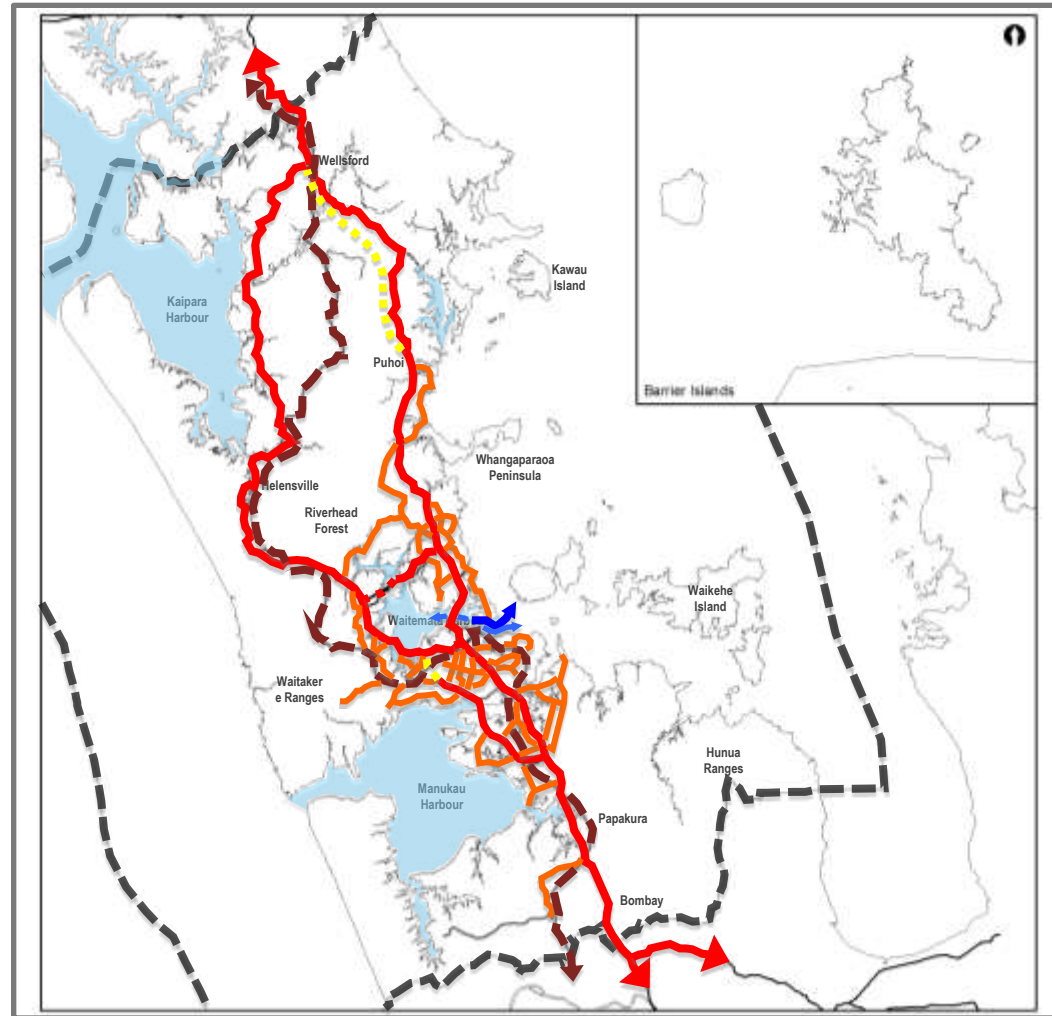
- Increasing social inequalities (spatial polarisation) – pride creating one unified city and leading social responsibility
- Affordable and suitable housing – connected towns and villages, enhanced public transportation, funding options, integrated provision of infrastructure
- Economic investment – innovative industries, employment centres
- Complex environmental issues – rural, coastal, biodiversity, heritage, urban design, quality, climate change



First Auckland Plan – what we know

- Key transport linkages

-  State Highways
-  Major Connectors
-  Rail
-  Sea (freight)
-  Sea (ferry)
-  Proposed SH Extension



First Auckland Plan – what we know

- Major environmental attributes



Harbours



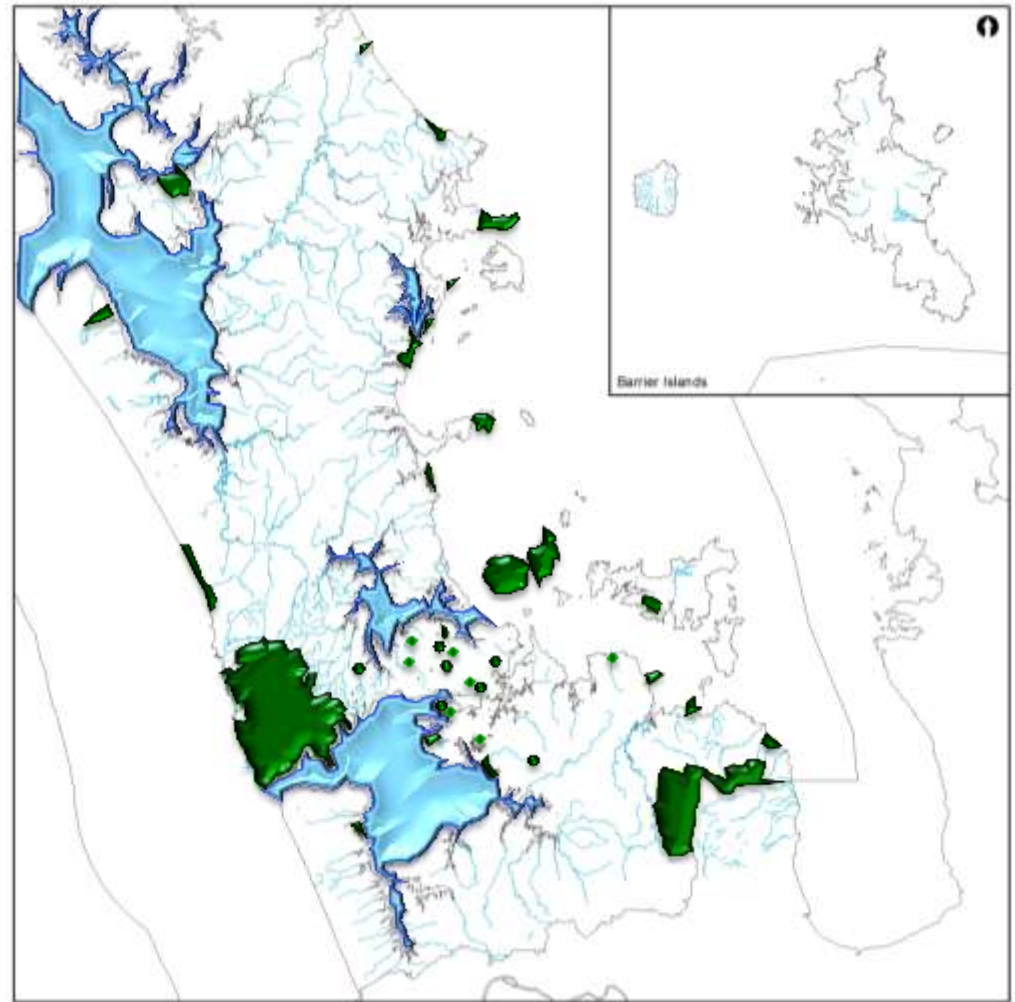
Regional Parks / Scenic Reserves



Significant Open Space / Volcanic Cones



Rivers / Streams



First Auckland Plan – what we know

- Major centres of employment



Over 20 000

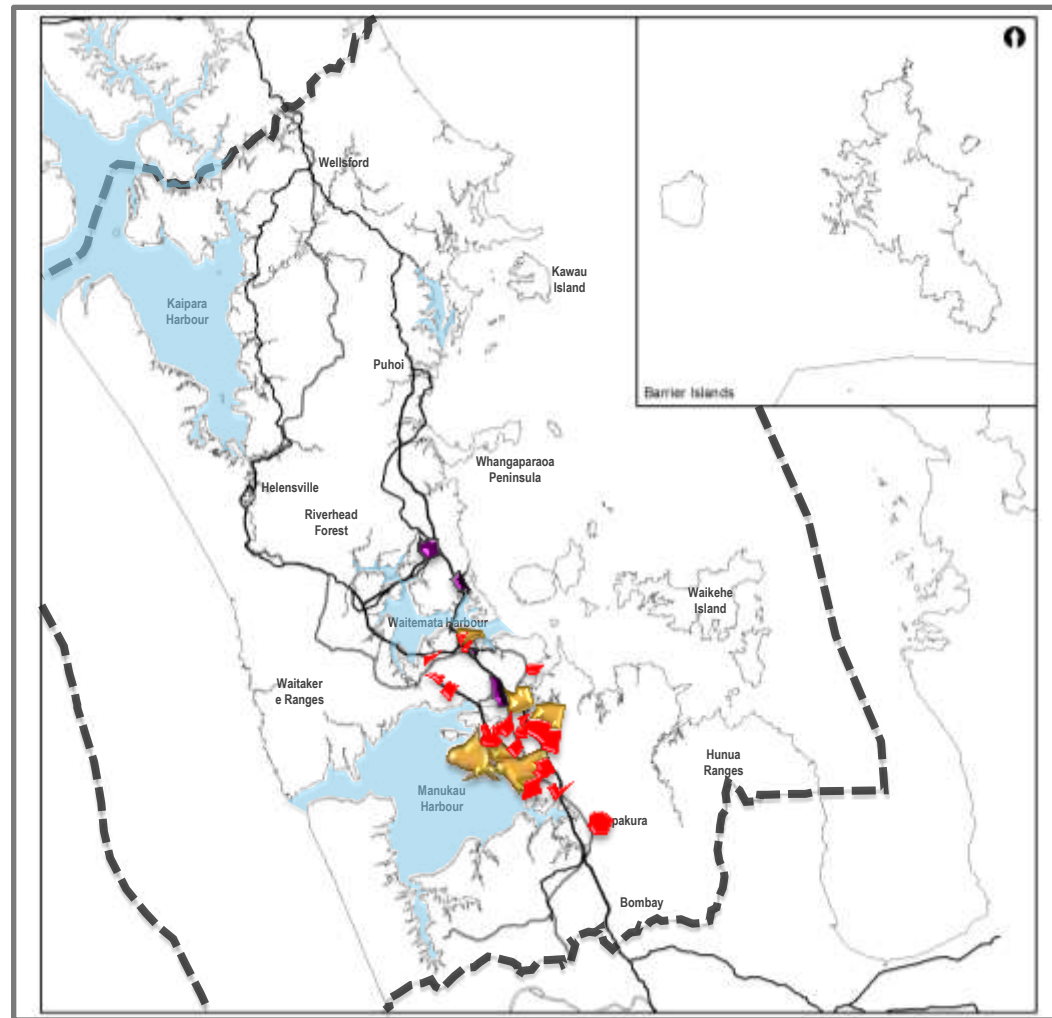


10 000 to 20 000

- Level of unemployment



Highest unemployment – 7% +



First Auckland Plan – what we know

- Post secondary qualifications

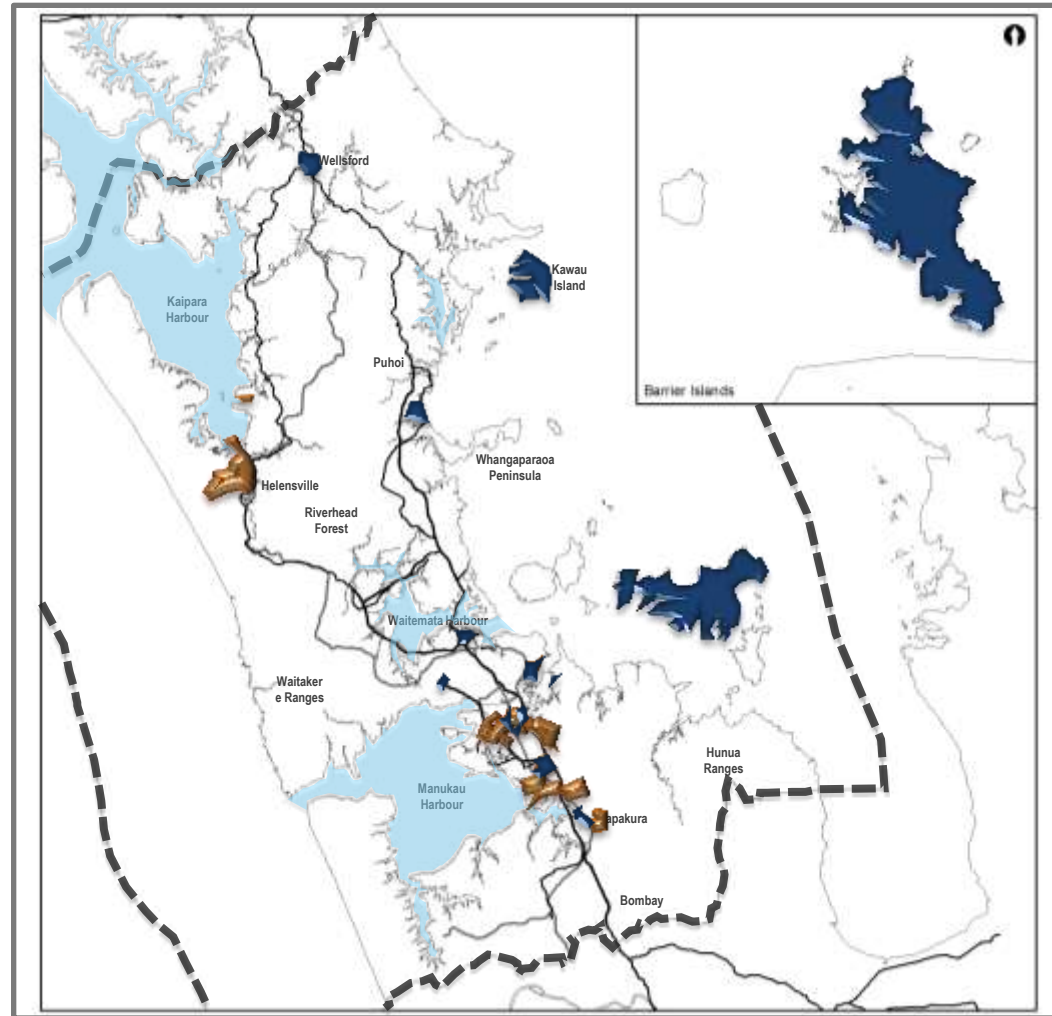


10% or less of people

- Lowest household income



\$0 to \$40000 pa



First Auckland Plan – what we know

- Population under 5

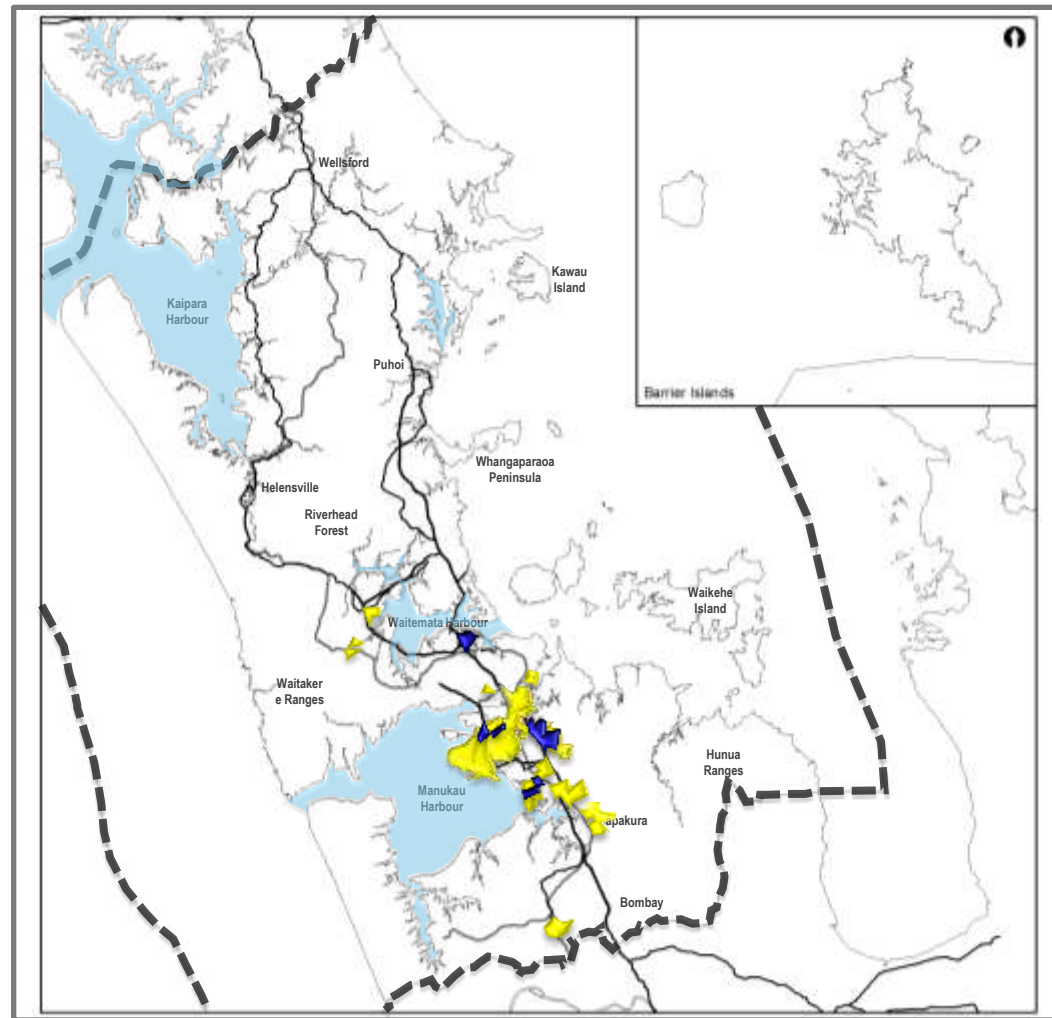


Between 10% and 15% of people

- Population under 25



Between 40% and 50% of people

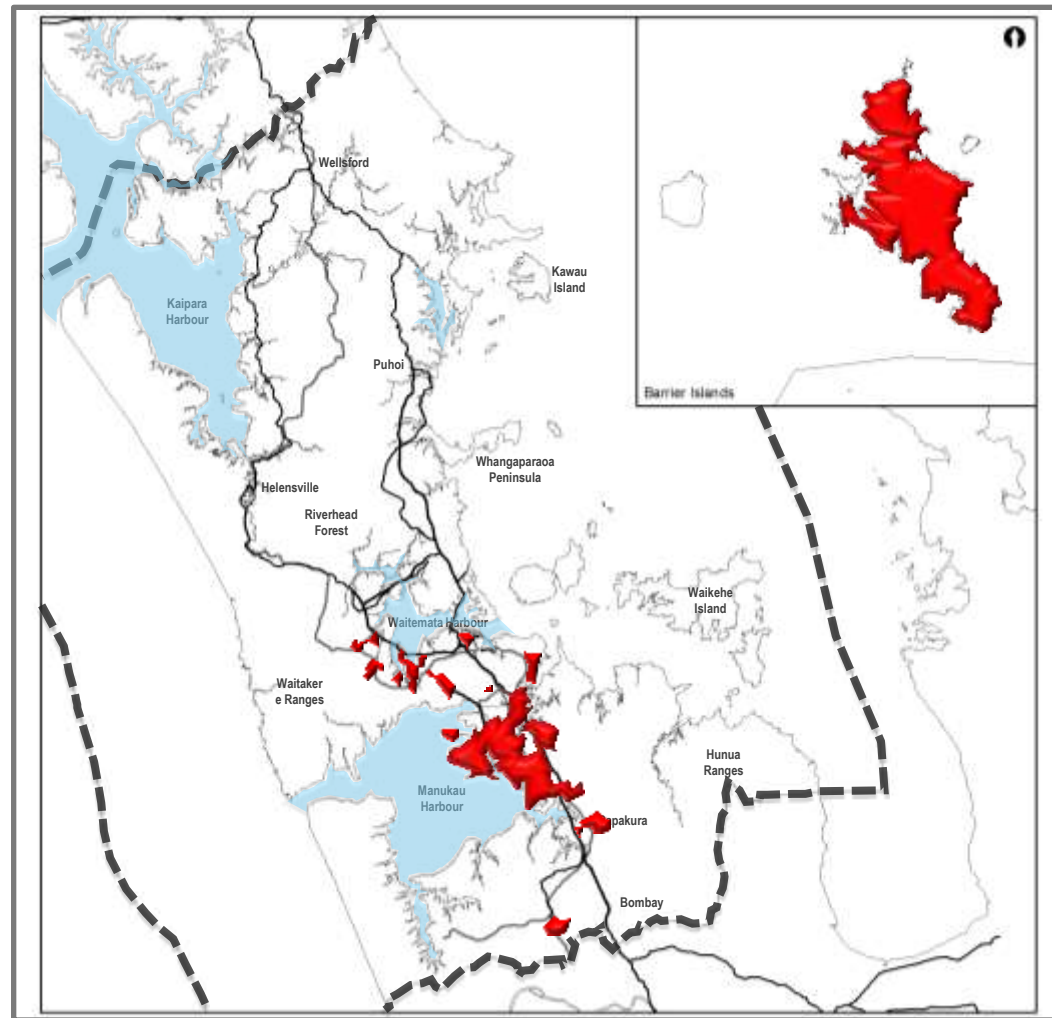


First Auckland Plan – what we know

- Highest levels of deprivation



Deprivation
Score 9 & 10



Possible Approach: First Order and Complementary Spatial Priorities

➤ First Order Priorities

- One international city centre for the whole of Auckland
- Southern opportunity area
- Our unique environment

➤ Complementary Priorities

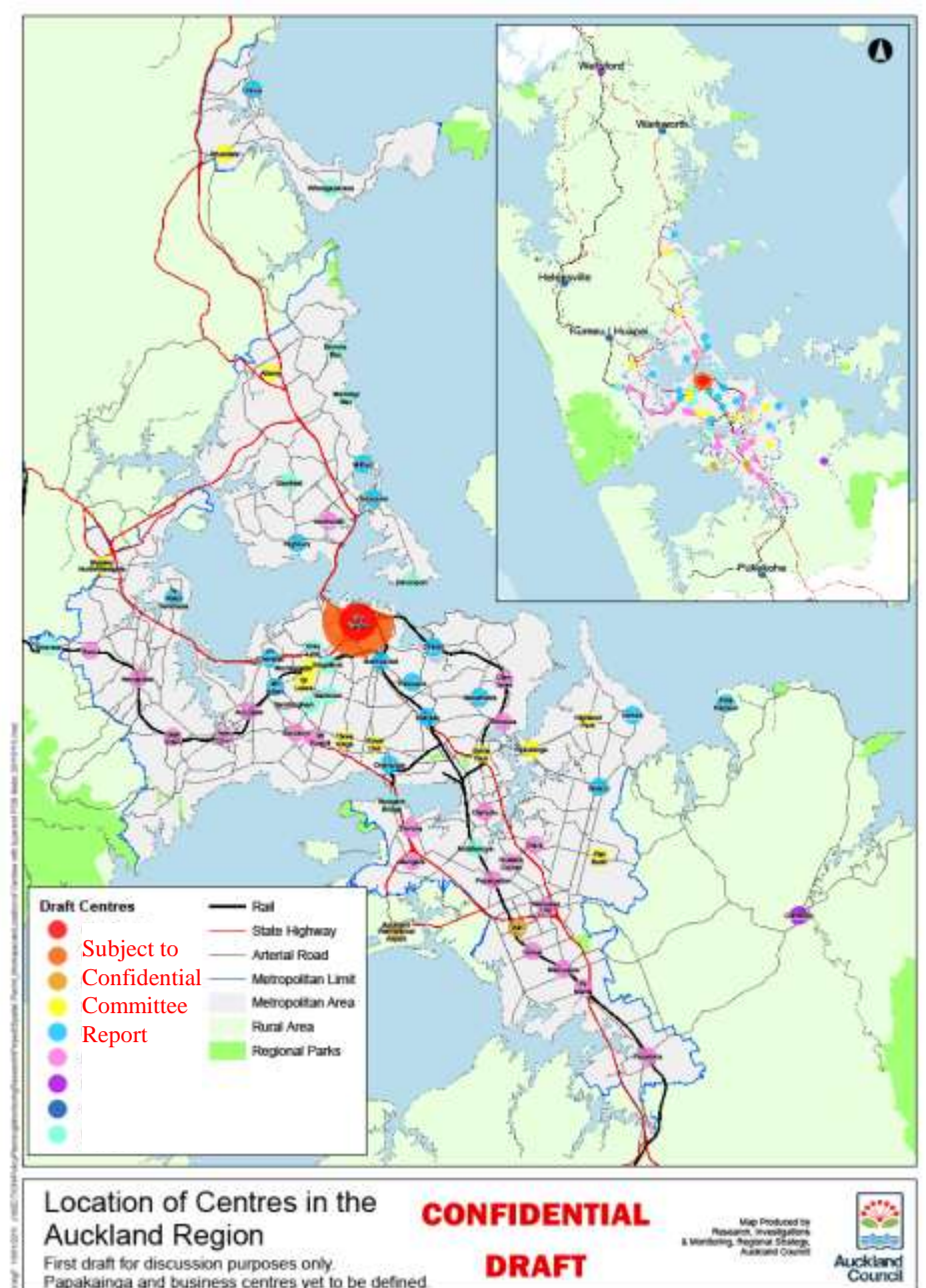
- Centres of growth and regeneration

➤ Cross-Cutting Issues

- Transport, climate change, housing, rural, recreational etc



Where will the extra 600,000 people in 20 years live?



Top 12 transport initiatives for *The World's Most Liveable City*



Brief Descriptors of Categories

- Regeneration – requires Central Government and Council intervention working with the private sector
- Market potential – market indicators suggest private sector interest, Council enables market, eg through infrastructure provision
- Emergent – market interest but some continued Council involvement
- Satellite – future growth centres outside urban MUL
- Business – centres of employment – primary function
- Papakainga – Maori villages



*All subject to
Urban
Design,
Character &
Heritage
Assessment*

Auckland (Spatial) Plan, LTP work programme

