

Construction Clients Group

25 June 2008



Agenda

- What we procure
- Position in Organisation
- Contract Landscape
- Strategic Procurement Plan
- Performance measurement
- Client of choice

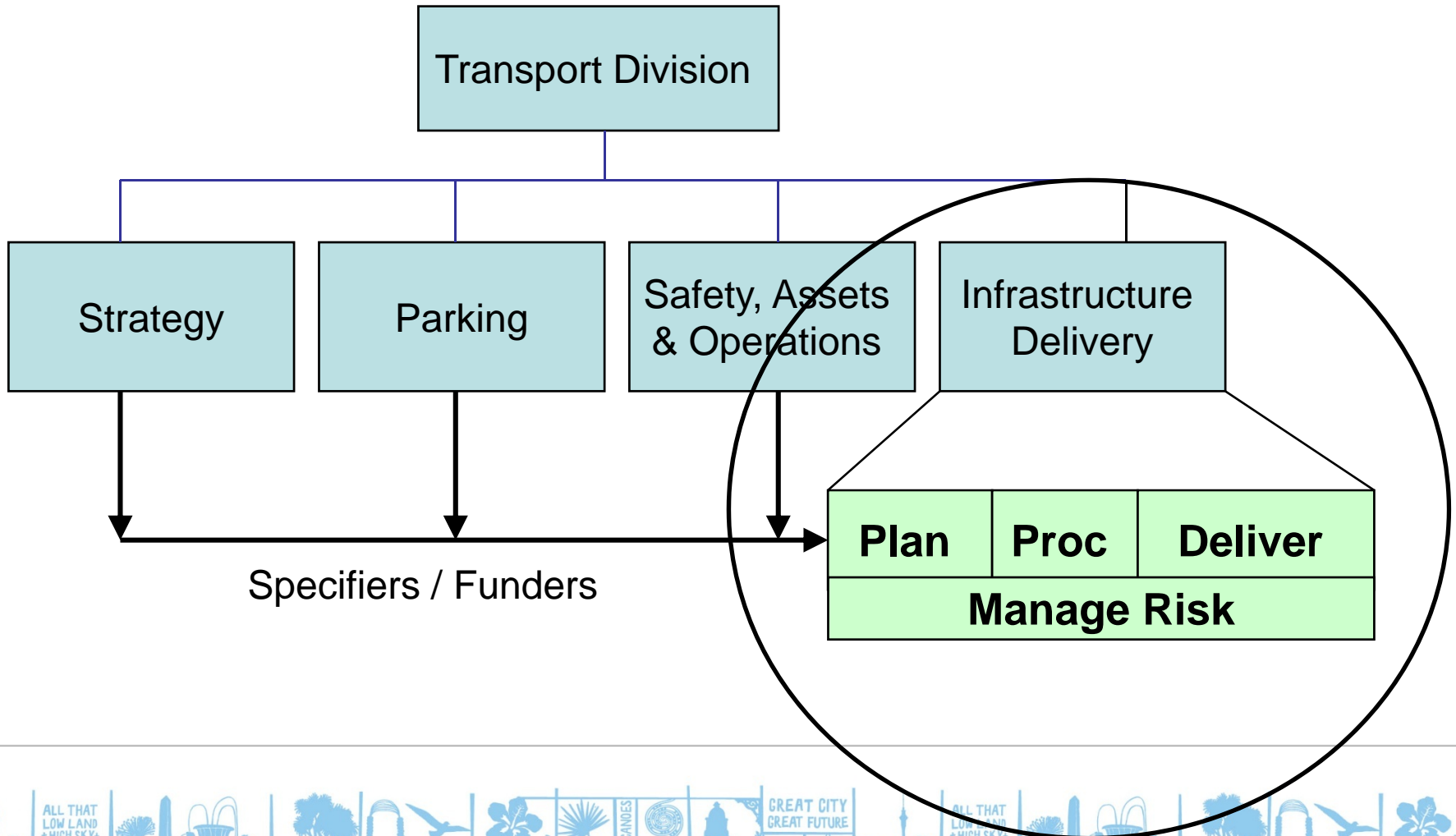


What we procure

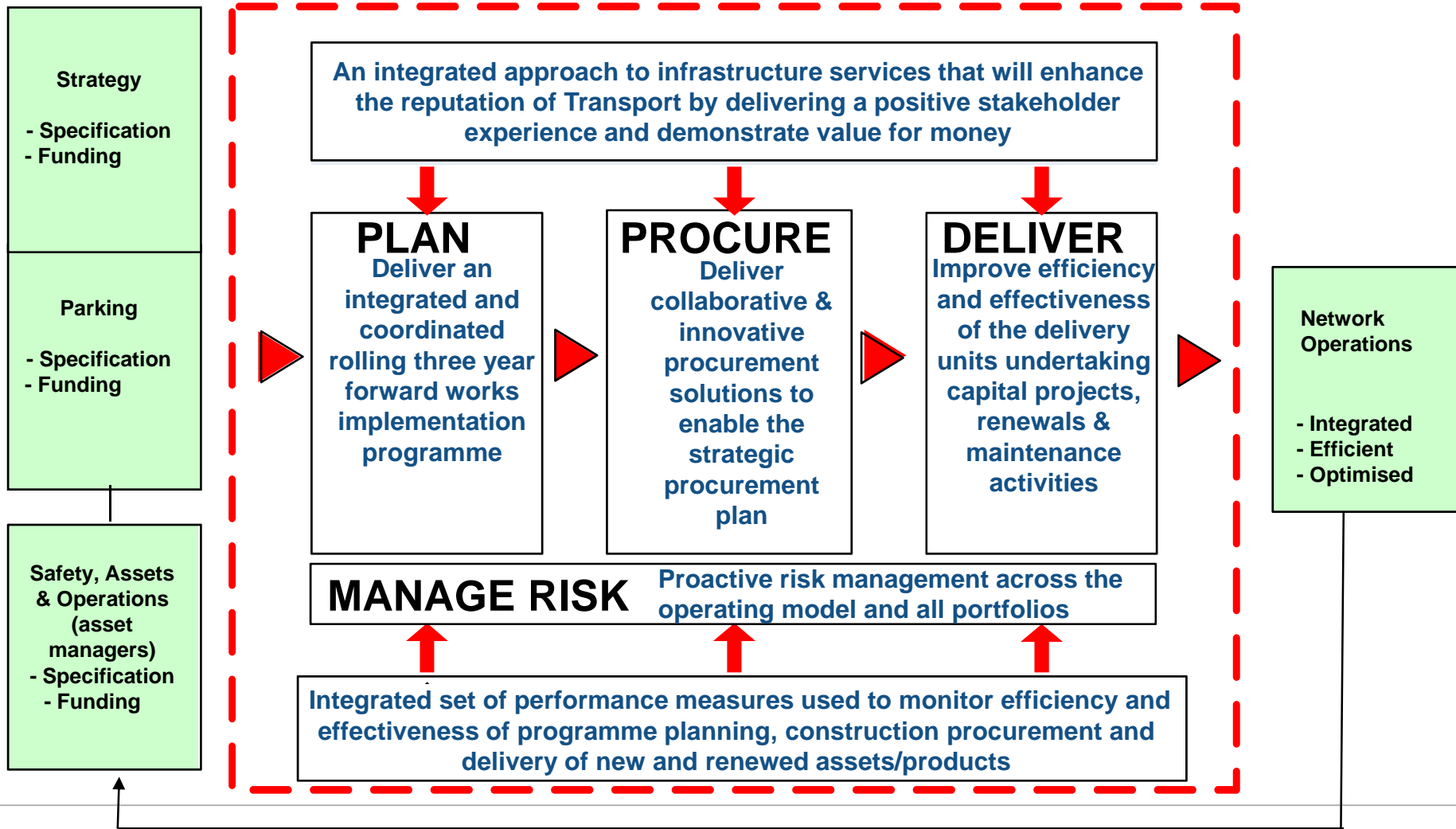
- **Capital Expenditure**
 - \$160 million p.a. avg. over the next five years.
 - includes a wide range of projects including footpath and road renewals, cycle/walkway improvements, minor safety works, etc.
- **Operational Expenditure –**
 - \$25 million p.a. avg. over the next five years
 - includes maintenance associated with assets having a total replacement value of \$3 billion.



Transport structure as at June 07

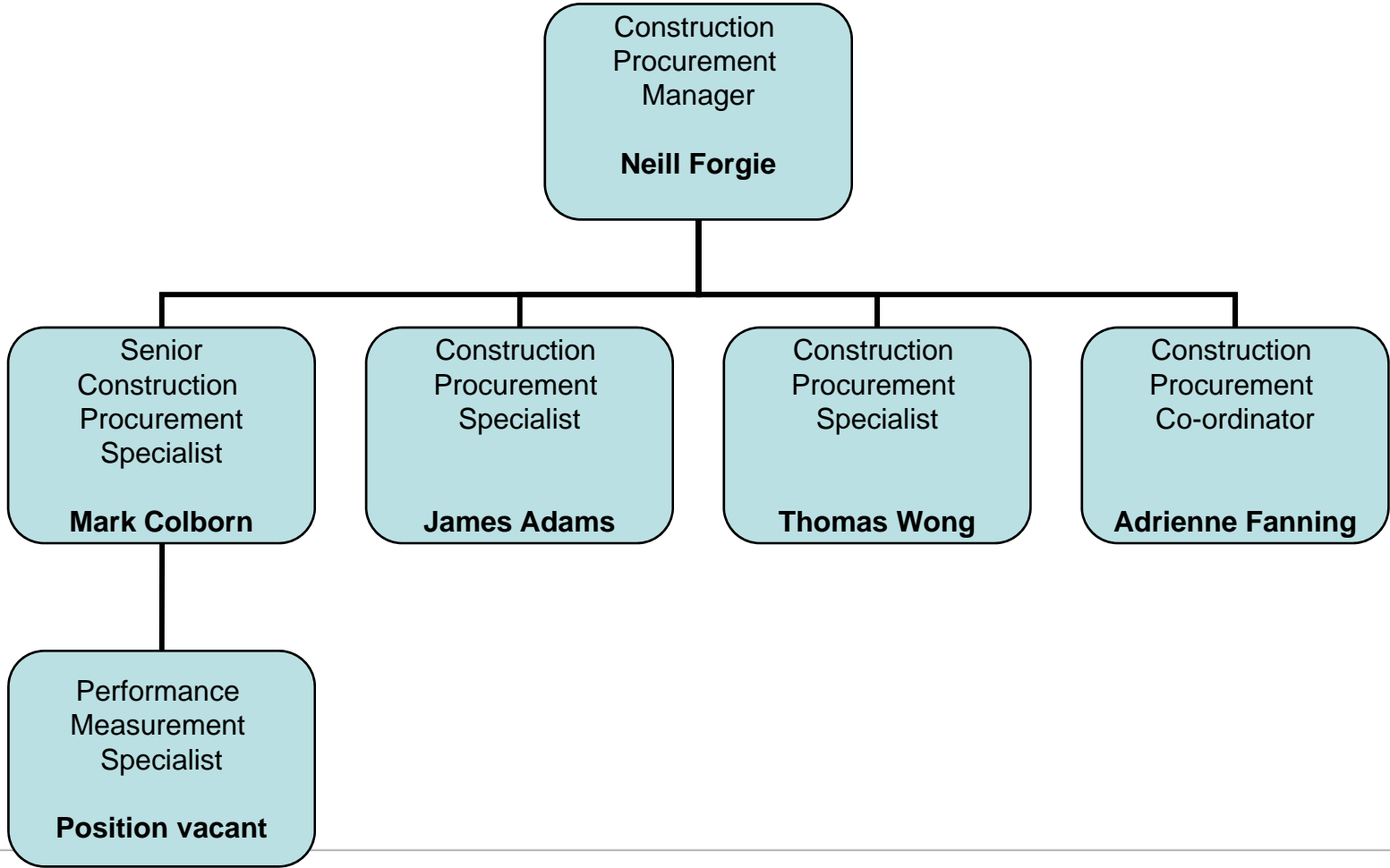


Infrastructure delivery model



Transport Infrastructure Delivery Group

Construction Procurement Team (June 2008)



Contracting landscape from 1 July 2008

