

# What does Education Infrastructure Service do?

by  
**Rob Giller, Strategy and Policy Manager**



# Our Purpose:

**EIS provides modern, safe, and inspiring learning environments; supports effective use of information and communication technologies; and enables access to education through transport assistance.**



# Asset Management is our Future

- ▶ We are transforming to a functionally aligned organisation based around asset management (and collaboration)
- ▶ The width of our responsibilities / interests means our functional structure combines aspects of:
  - large central govt asset owning agencies, eg NZTA, HNZ
  - local govt property and asset groups, eg WCC
  - 3<sup>rd</sup> party asset management providers





# MINISTRY OF EDUCATION

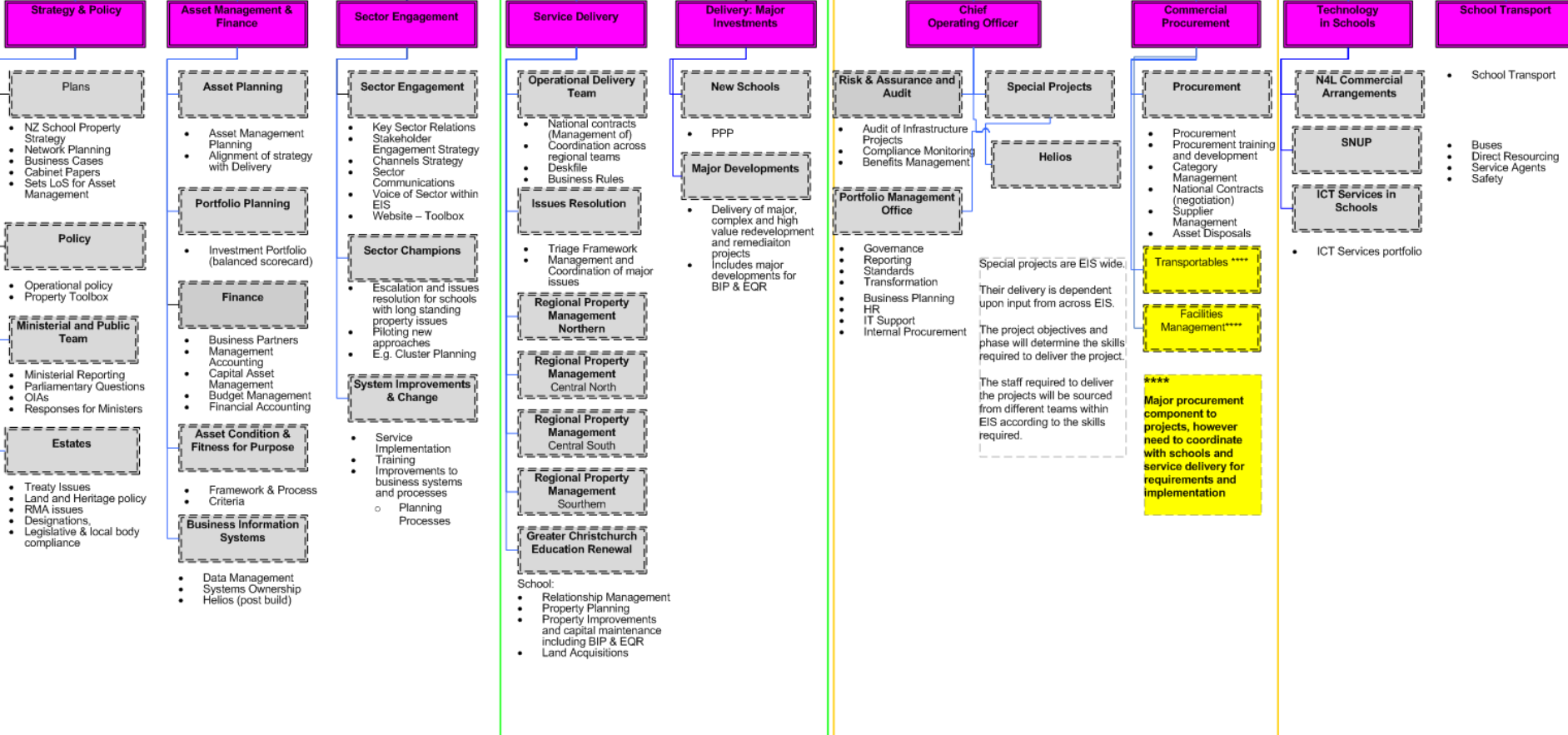
Te Tāhuhu o te Mātauranga

Acting roles  
Will be recruited during  
Quarter 1 2014

Head of EIS

Executive Support

Establishment Teams for Emerging Business



Defining Requirements

Lifecycle Decision Making

Enablers

# What are we doing

- ▶ We expect to invest around \$6.5 Billion over the next ten years, this includes:
  - \$1.1 Billion in Christchurch
  - Currently five new schools, 19 major redevelopments, 17 kura/wharekura and 16 land acquisitions under way (\$250M in 2014/15)
  - 1500 schools have been ‘SNUP’ed and the programme concludes in 2016
- ▶ We are continuing to address weather tightness issues
  - 40 claims settled to date
  - Settled with two out of three providers in our product liability claim and once case ongoing
- ▶ We have saved \$800 million through our destructive testing of timber framed buildings
- ▶ We transport 104,000 students twice a day, and spend around \$170 million per annum on transport services



# Challenges

- ▶ Portfolio replacement cost of circa \$22 Billion
- ▶ 60% of schools are more than 40 years old and many teaching spaces do not meet modern learning standards
- ▶ Demographics – significant areas of decline and growth (particularly demand in Auckland)
- ▶ Ongoing remediation and replacement of leaky buildings
- ▶ Ongoing remediation (and potential replacement) of earthquake prone buildings
- ▶ Construction cost inflation
- ▶ What will ultrafast broad band mean to teaching



# Opportunities

- ▶ Our Capital Expenditure forecast is approx \$6.5 Billion over ten years
- ▶ Procurement
  - Christchurch rebuild, \$1.1 Billion
  - PPPs
  - Transportable Buildings project
  - National and Regional Panels for specialist services eg QS, PM
  - National and Regional supply contracts, eg electricity, gas, BWOF, FM
- ▶ Partnership
  - Work with industry, contractors, suppliers
    - They are an integral part of our delivery chain and we need their intelligence
  - What are their issues / expectations
    - Review our standard contracts documentation



# The 8 Point Announcement

## 1. Invest in areas of Growth

\$134 million to support new schools and major capital works

\$70 million allocated to establish 3 new schools, 65 additional classrooms

## 2. Target support to schools that require major developments

Approx. \$300 million over six years to assist approx 30 schools with the most complex infrastructure issues

## 3. Help schools resolve outstanding property issues

Dedicated team to work with schools and quickly resolve issues

## 4. Provide schools with access to a facilities management service

Option for schools to contract facilities management services to help minimise day to day time spent on property management

## 5. Offer support for major property works

Schools can work in partnership with the Ministry on major property works to increase oversight, support delivery, reduce the school's time on contractual matters





# The 8 Point Announcement

## 6. Deliver higher quality services and better value for money

Different levels of property assistance available to schools from a suite of certified professional services and expertise procured through Ministry-coordinated national programmes

## 7. Provide schools with incentives to collaborate and develop innovative approaches to property developments

Schools encouraged to collaborate with other schools and groups(eg TLA) about shared facilities (will also require a focus on removing barriers)

## 8. Provide greater transparency about the costs and condition of school property

Better access to information about the condition and costs of school property to inform planning and investment decisions



# Questions ?

